



Quality. Performance. Value.

## MONOCRYSTALLINE MODULE

DM280-M156\*-60 Black series  
60 x 6" / 255 - 280W

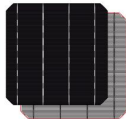
Wattages :  
255 / 260 / 265  
270 / 275 / 280



<p> <b>Technology</b> High module conversion efficiency through superior manufacturing technology</p> <p> <b>Durability</b> Module can bear snow loads (5400Pa) and wind loads (2400Pa)</p> <p> <b>Power-positive Tolerance</b> Guaranteed power output (0/+ 3%)</p>	<p> <b>Performance</b> High performance under low light conditions (Cloudy days, mornings and evenings)</p> <p> <b>Quality</b> Manufactured according to International Quality and Environmental Management Systems (ISO9001, ISO14001)</p> <p> <b>Value</b> Our vertically integrated business model allows for competitive pricing and great value</p>
--	--

DMEGC SOLAR.COM

### The cells have better electrical parameters



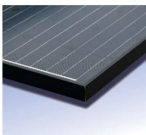
- M2 cells have been used in the modules with better performance in terms of parameters

### Superior Manufacturing-Quality Assurance



- All modules are manufactured using TQC & SPC quality control systems
- Advanced cell sorting to avoid electric mismatch
- Triple 100% EL Test- before & after lamination & prior to shipment
- Comprehensive Safety and Reliability tests are performed

### Visible Quality



- Durable, high-quality, smooth aluminum alloy frames
- Rigid construction - 2400 Pa & 5400 Pa rated assembly
- Specially designed drainage holes prevent the frame from deforming or breaking due to freezing weather and other forces

### Power Output



- Our IP67 rated junction box improves module performance and stability
- High-performance connectors provide low resistance interconnection to ensure the full utilization of module output power

### Warranty

- 10 Year Manufacturers Warranty
- 10 Year Warranty, 90% power output
- 25 Year Warranty, 80% power output

Certifications and standards:  
IEC 61215, IEC 61730  
- Conformity to CE, UL1703



A Member of the Hengdian Group

Rev.B1

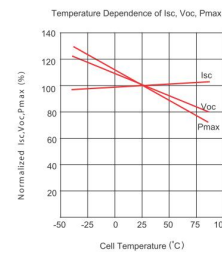
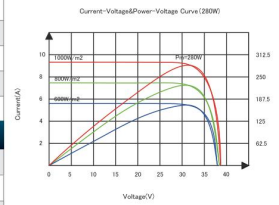
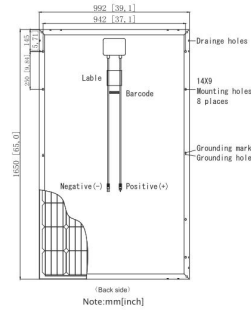
Electrical Specifications		* STC irradiance of 1000w/m <sup>2</sup> , spectrum AM 1.5 and cell temperature of 25 ° C					
Module Type	Pm(W)	Tolerance	Imp(A)	Vmp(V)	Isc(A)	Voc (V)	Module Efficiency
DM255-M156'-60BK	255	0/+3%	8.47	30.12	8.97	37.84	15.58%
DM260-M156'-60BK	260	0/+3%	8.55	30.42	9.04	38.05	15.88%
DM265-M156'-60BK	265	0/+3%	8.63	30.71	9.11	38.26	16.19%
DM270-M156'-60BK	270	0/+3%	8.71	31.01	9.18	38.47	16.50%
DM275-M156'-60BK	275	0/+3%	8.79	31.31	9.25	38.68	16.80%
DM280-M156'-60BK	280	0/+3%	8.87	31.60	9.32	38.89	17.11%

Mechanical Data	
Cell Type	Monocrystalline 156.75×156.75 mm
Cell Arrangement	60 (6 × 10)
Module Structure	Glass / EVA / Backsheet (Black)
Front Glass Thickness	3.2 mm
Applicatinn Class	Class A at IEC 61730
Junction Box Rating	IP 67
Cables	1000 1000 m / 4mm
Connector Type	MC4 compatible
Fire Rating Class	Class C

Maximum Ratings	
Operating Temperature	-40°C to +85°C
Maximum Load Capacity	Snow - 5400 Pa / Wind - 2400 Pa
Maximum System Voltage	1500V DC (UL) / 1500V DC (IEC)
Maximum Series Fuse Rating	15A
Number of Diodes / Busbars	3 / 4
Maximun Cell Efficiency	6" Mono / 20.0%

Packaging		* frame sizes (35mm / 40 mm) available upon request	
Module Dimensions	1650 × 992 × 35 mm	1650 × 992 × 40 mm	
Weight	18.5 kg	18.7 kg	
Pallet Dimensions	1690 x 1130 x 1220 mm	1690 x 1130 x 1230 mm	
Container	40' HQ	40' HQ	
Pieces per Pallet	30	28	
Pallets per Container	28	28	
Pieces per Container	840	784	
Gross Weight per Pallet	599 kg	570 kg	
Gross Weight per Container	16,772 kg	15,960 kg	

Temperature Characteristics	
Nominal Operating Cell Temperature (NOCT)	45°C ± 2°C
Temperature Coefficient of Isc	+0.0425% / °C
Temperature Coefficient of Voc	-0.3682% / °C
Temperature Coefficient of Pmax	-0.43% / °C



Hengdian Group DMEGC Magnetics Co., Ltd.  
Hengdian Industrial Zone, Dongyang City  
Zhejiang Province, China 322118

Tel: 0086-579-8655-4950 Fax: 0086-579-8655-4845  
Email: solar@dmegc.com.cn  
www.chinadmegc.com www.dmegcsolar.com